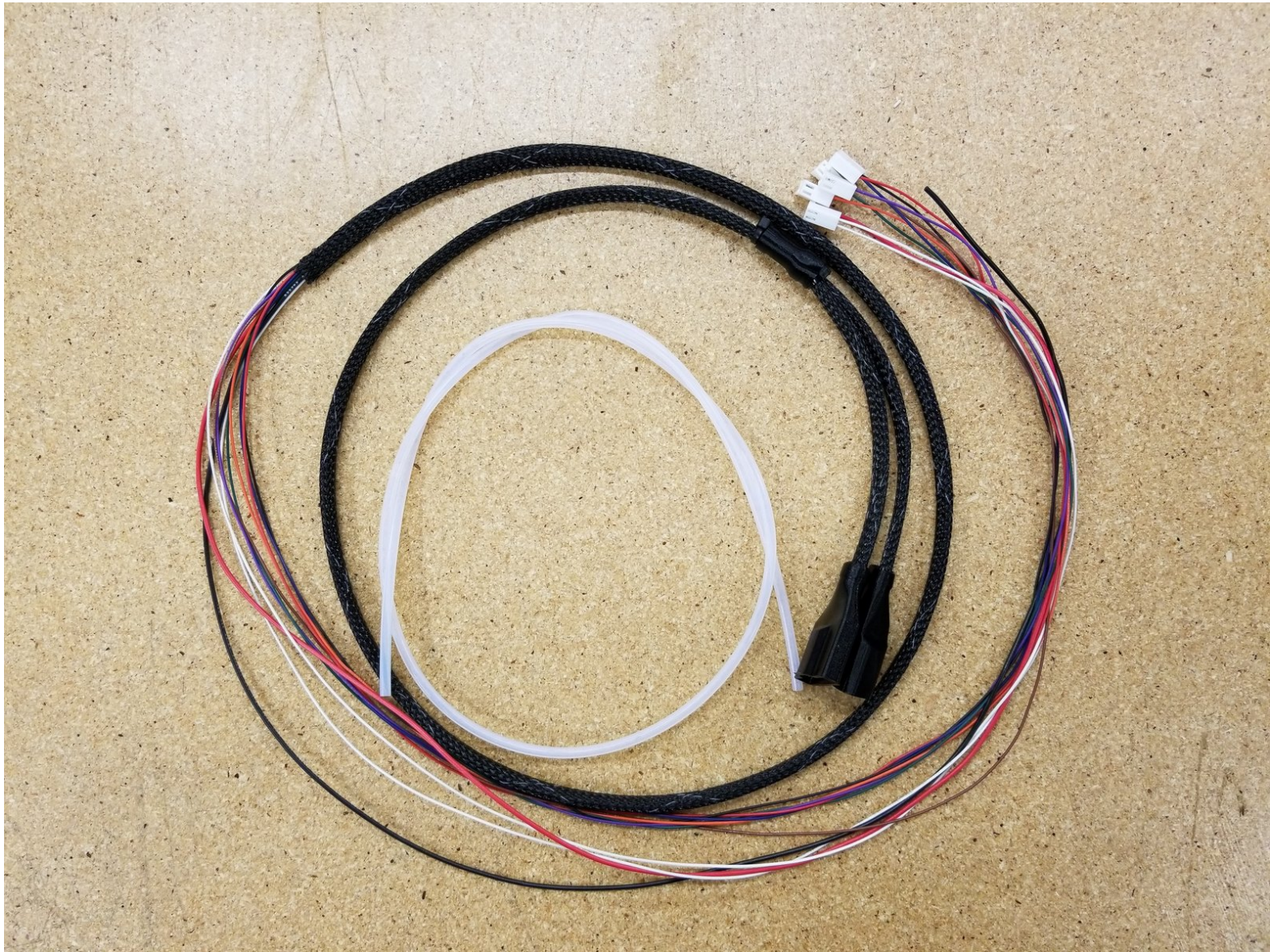


# SeeMeCNC Guides

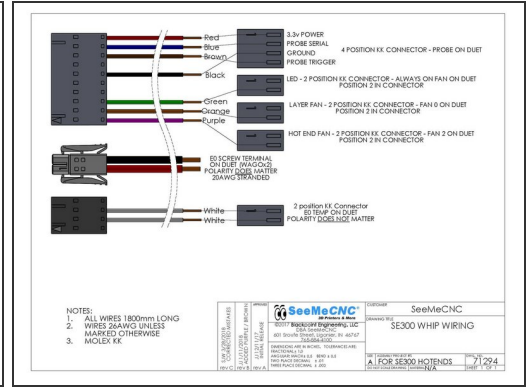
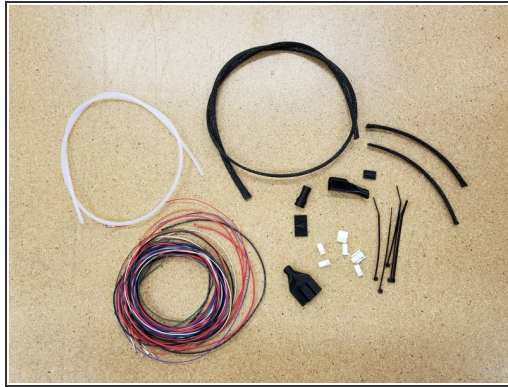
## SE300 Whip Kit Assembly

This guide is a simple illustration of how the SE300 wiring whip is connected. Please see the attached PDF file.

Written By: geneb

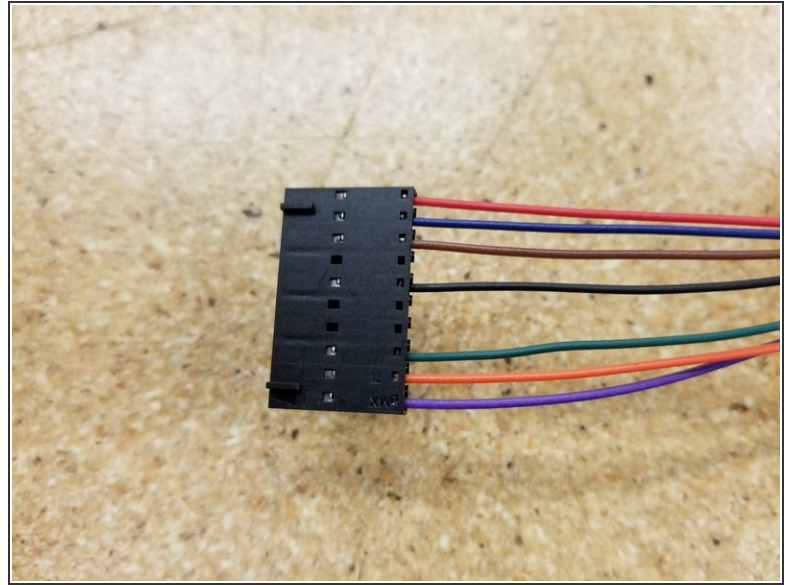
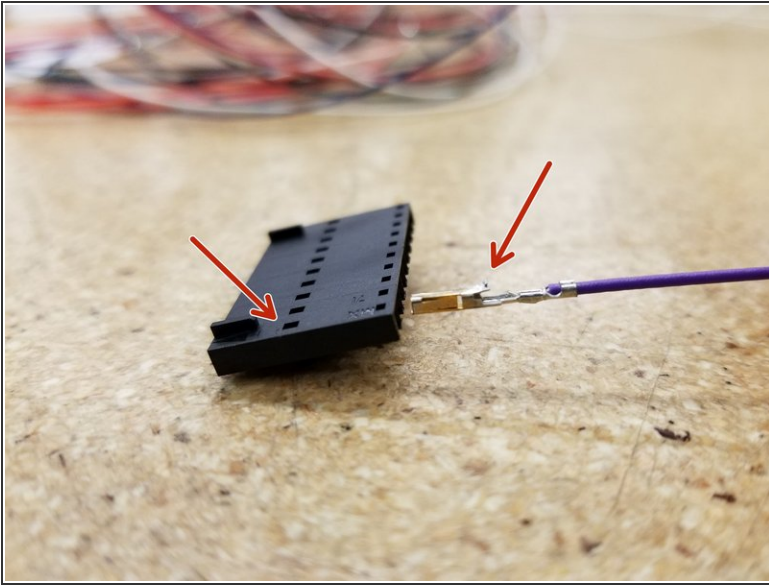






- This document was generated on 2021-12-24 01:55:42 PM (MST).

## Step 2 — The 10-position SL Connector

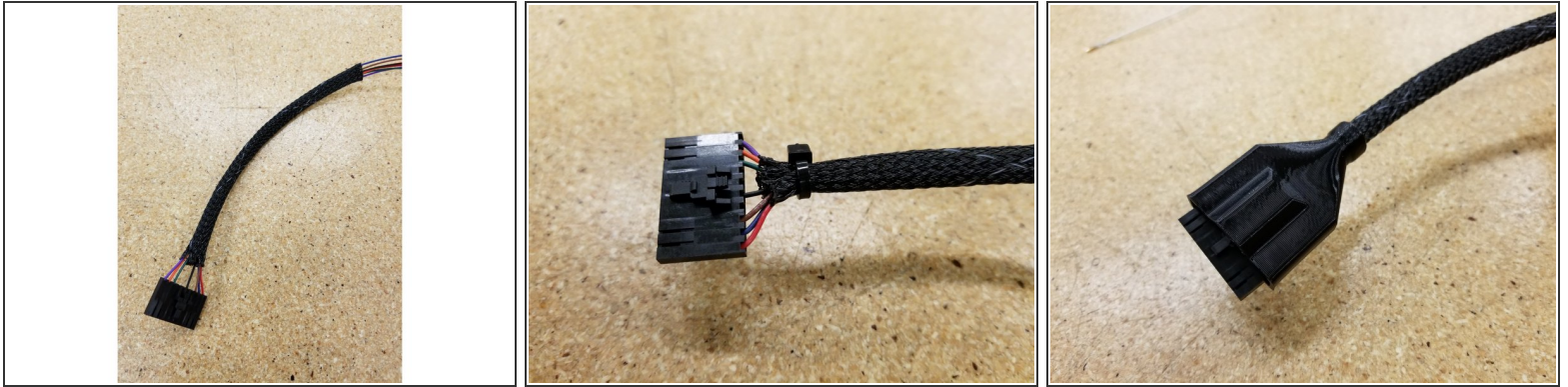


- Begin inserting the wires into the black SL 10 position housing.

**⚠ Be sure the small tab on the metal crimp terminal is facing the same direction as the square holes in the connector. If inserted properly, you should hear and feel a satisfying click as the tab seats. Give the wire a gently tug to make sure it's seated properly.**

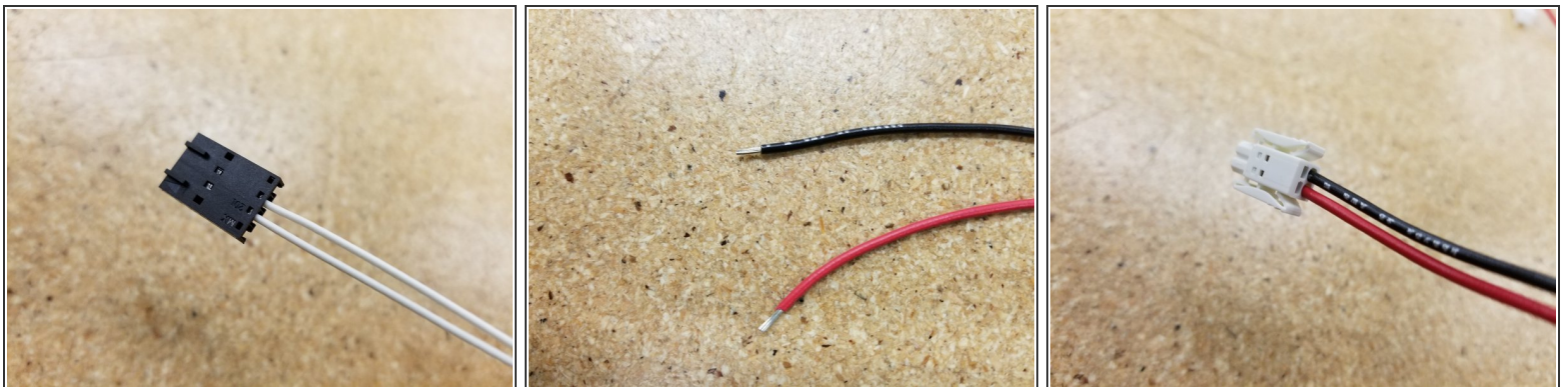
- Repeat for the remainder of the wires, using the diagram from earlier as a guide.

### Step 3 — Mesh Loom #1



- Pass the wires through one of the shorter lengths of mesh loom material.
- Tightly zip tie the bundle to hold everything in place.
- Run everything through the wider cable boot, covering the zip tie and connector.

### Step 4 — The 4-position SL / 2-position Push-In Wire Bundle



- Insert the two white wires in the 4 pin SL connector just as you did for the 10 pin SL connector in Step 2.
- Make sure an adequate amount of the PVC has been stripped from the red and black 20awg wire, and insert into the 2 pin push-in wire terminal as shown.

**⚠ Remember to use the wire diagram from earlier as reference when needed**



## Step 5 — Mesh Loom #2



- Pass the cables through the mesh loom, zip-tie them secure, and install the cable boot as we did in Step 3.
- Zip tie the two cable bundles together at the top of the mesh looms as shown.

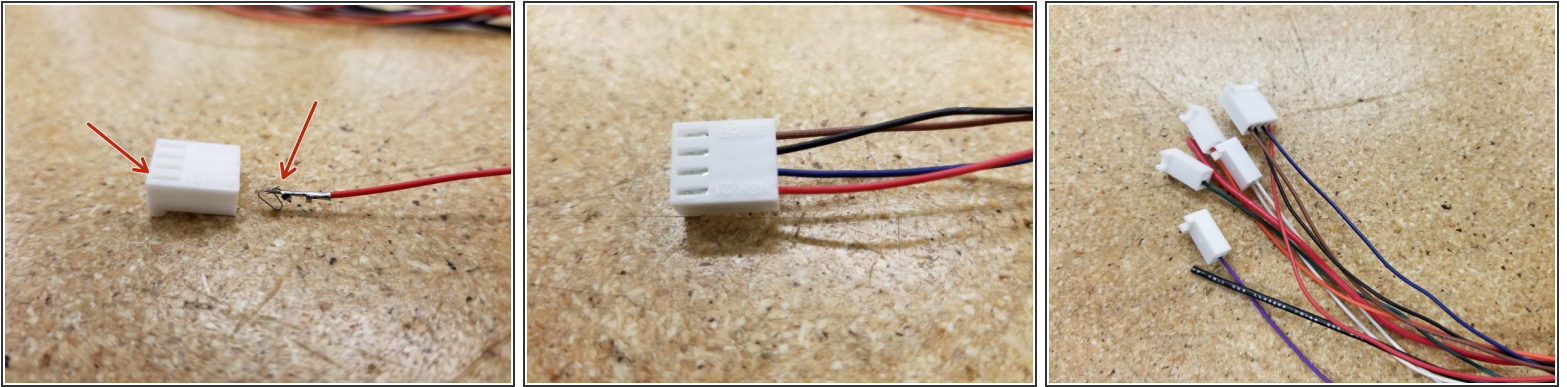
## Step 6 — Final Mesh Loom



- Pass all the cables through the mesh loom.
- Rout the cables and mesh loom through the loom splitter, using it to cover the joint between the three sections of mesh loom.
- Add a zip tie to the mesh loom, just above the loom splitter, to secure it in place. See photo for reference.



## Step 7 — The KK Connectors



- Insert the KK connectors as shown, making sure that the small tab on the metal wire crimp is aligned with the tab hole on the plastic connector.

**⚠** Again, if inserted properly, you should hear and feel a satisfying click as the tab seats. Give the wire a gently tug to make sure it's seated properly.

- Repeat for the remaining KK connectors, **carefully** following the wiring diagram from earlier.

## Step 8 — The Whip is Complete!



- Use your completed whip in your machine!
- ⓘ The PTFE tubing is shown not installed as your installation may vary depending on which machine the whip is installed.