

# SeeMeCNC Guides

## DUET Setting up Macros

How to create Macros on the Duet web interface.

Written By: SeeMeCNC

The screenshot shows the Duet web interface for an Artemis51 printer. The top navigation bar includes 'Disconnect', 'Send G-Code...', 'Send', 'Upload & Print', 'Artemis51', 'Idle', and 'Emergency STOP'. The main content area is divided into several sections: 'Tools / Heaters / Extra' with a table of heater status, 'Temperature Chart', and 'Machine Status' table. A sidebar on the left contains links to 'Machine Control', 'Print Status', 'G-Code Console', 'G-Code Files', 'Macros' (highlighted with a red circle), 'Filaments', and 'Settings'. The 'Macros' section is active, showing a 'Macros Directory' table with columns for 'File Name', 'Size', and 'Last modified'. The table lists three files: 'First Probe' (247 B), 'Preheat Bed ABS' (47 B), and 'Preheat Bed PLA' (45 B). A red box highlights the '+ Make new...' button, which has a dropdown menu with 'Directory' and 'Macro' options. A tooltip 'Create a new macro file' is visible next to the 'Macro' option.

Tool	Heater	Current	Active	Standby
Tool 0 T0	Heater 1 active	25.5 °C	0	0
Tool 1 T1	Heater 1 active	25.5 °C	0	0
Bed	Heater 0 off	22.8 °C	0	

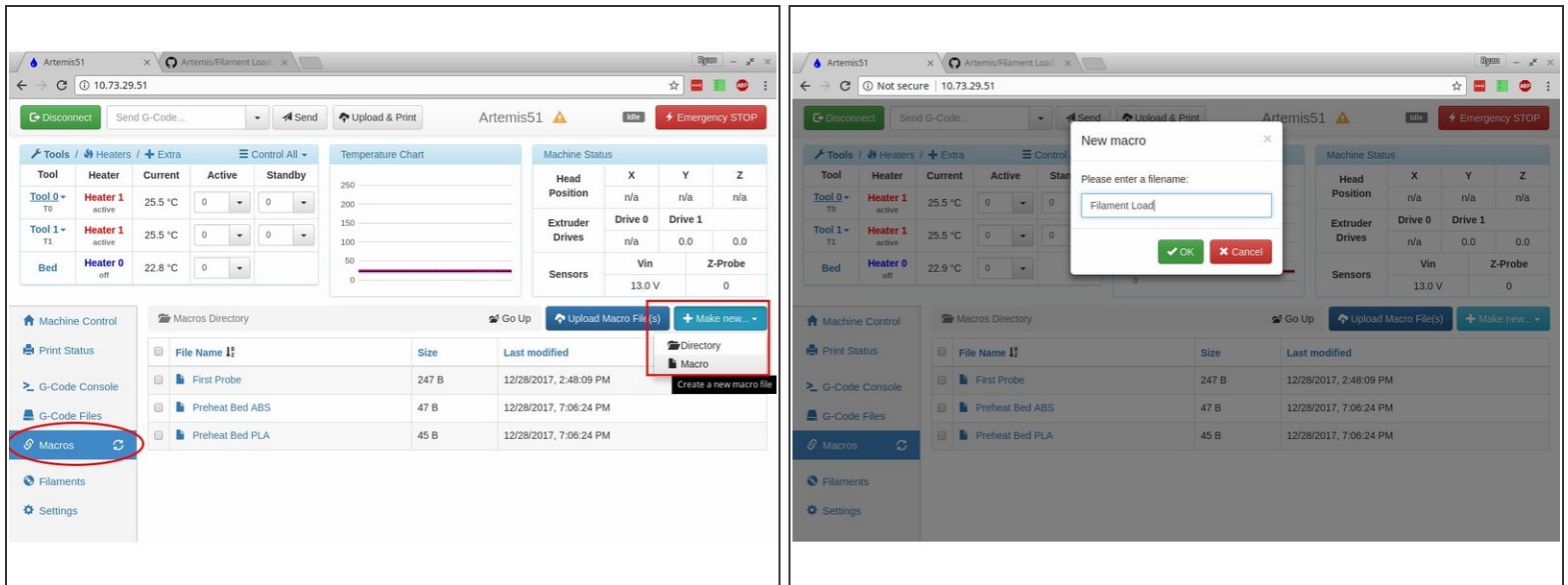
Head Position	X	Y	Z
	n/a	n/a	n/a

Extruder Drives	Drive 0	Drive 1
	n/a	0.0

Sensors	Vin	Z-Probe
	13.0 V	0

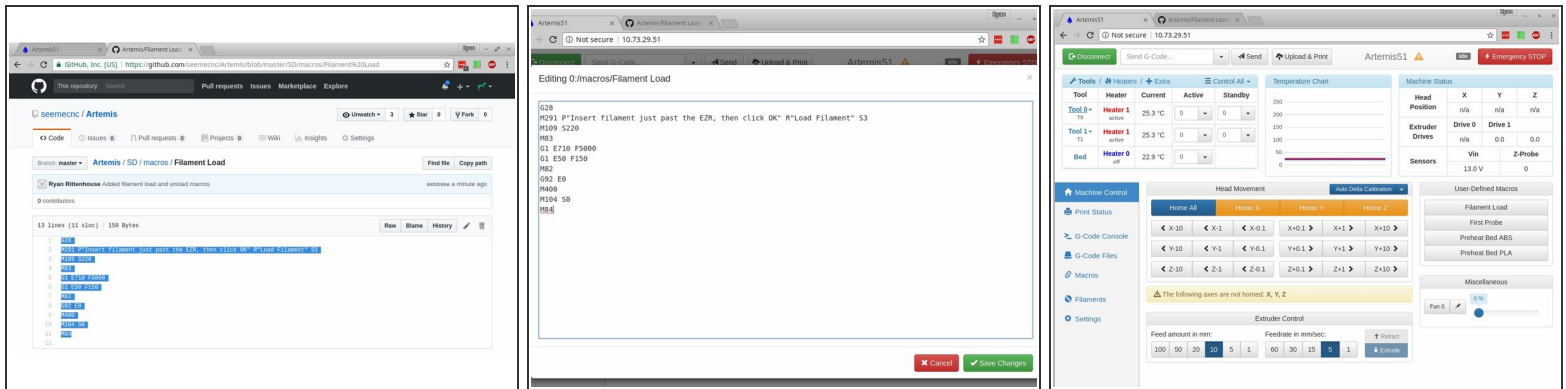
File Name	Size	Last modified
First Probe	247 B	12/28/2017, 2:48:09 PM
Preheat Bed ABS	47 B	12/28/2017, 7:06:24 PM
Preheat Bed PLA	45 B	12/28/2017, 7:06:24 PM

## Step 1 — Method 1: Copy and Paste



- Click on the "Macros" link on the left of the screen to enter the Macro list.
- Click the button on the right labeled "Make new..." and on the drop down menu that appears, click "Macro".
- You will be prompted to name the macro. Enter a name in the box and click OK.

## Step 2 — Method 1, continued



- If you are getting GCODE for the MACRO from another location (such as the SeeMeCNC Github), select the gcode you want to run when the macro is executed. Right click on the selected text, and click "Copy".
- Right click on the text area for the macro and click "Paste". Make sure all the text is correct, then click "Save Changes"
- The Macro is now available to run from the macro list, or from "Machine Control" tab under "User-Defined Macros"

## Step 3 — Method 2: Uploading a Macro file

The left screenshot shows the Artemis51 web interface with the 'Macros' tab selected in the left sidebar. The main panel displays a list of macros in a table with columns for File Name, Size, and Last modified. The 'Upload Macro File(s)' button is circled in red. The right screenshot shows the 'Machine Control' tab, displaying various machine status metrics, a temperature chart, and a list of user-defined macros on the right side.

- If you already have your macro saved to a file on your computer, you can upload it directly. (It must be a .gcode file)
- Click on the "Macros" tab on the left, then on "Upload Macro File(s)" on the right.
- Select your macro(s) for uploading.
- They will now be available in the macro list and under "User Defined Macros" on the Machine Control tab.