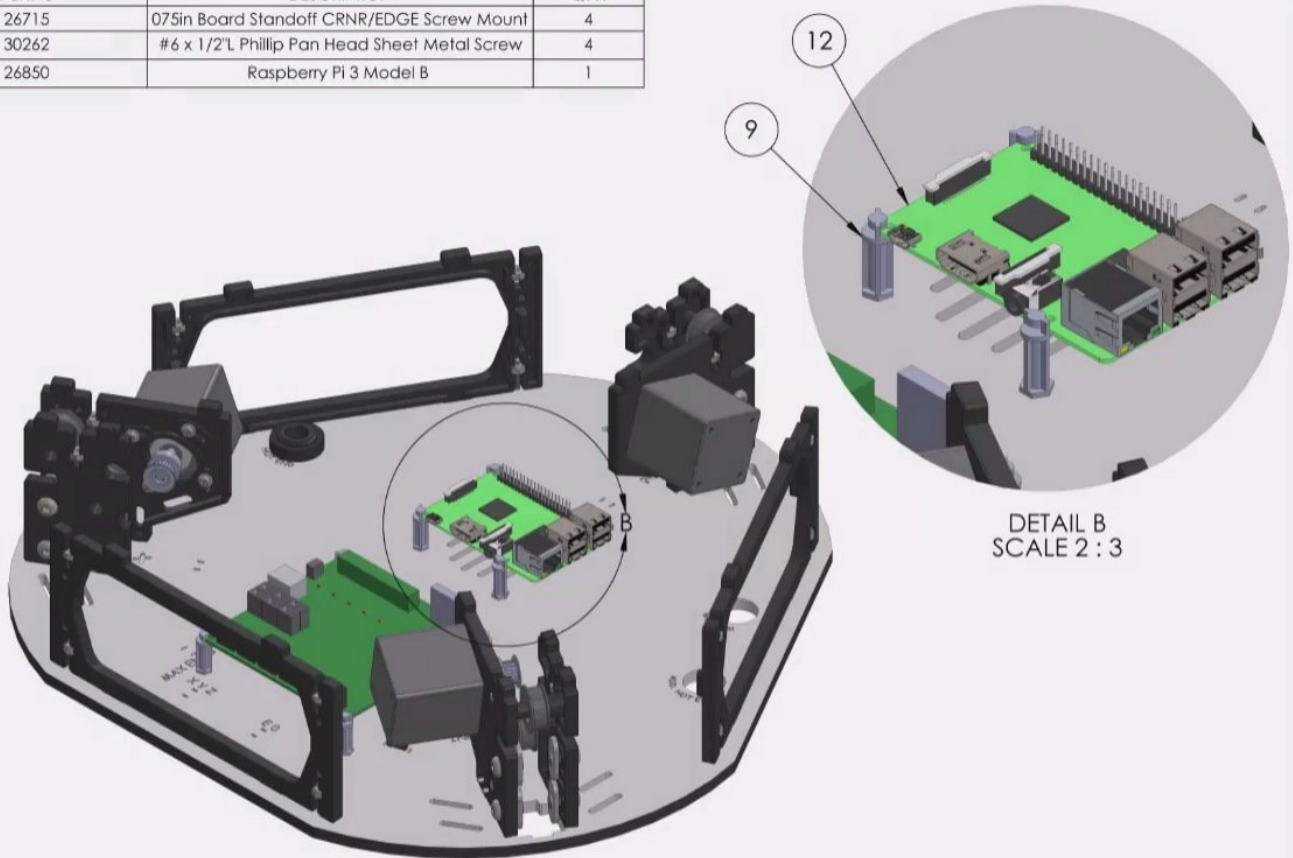


# SeeMeCNC Guides

## Step 5. Optional Upgrade: Installing the Raspberry Pi

Written By: SeeMeCNC

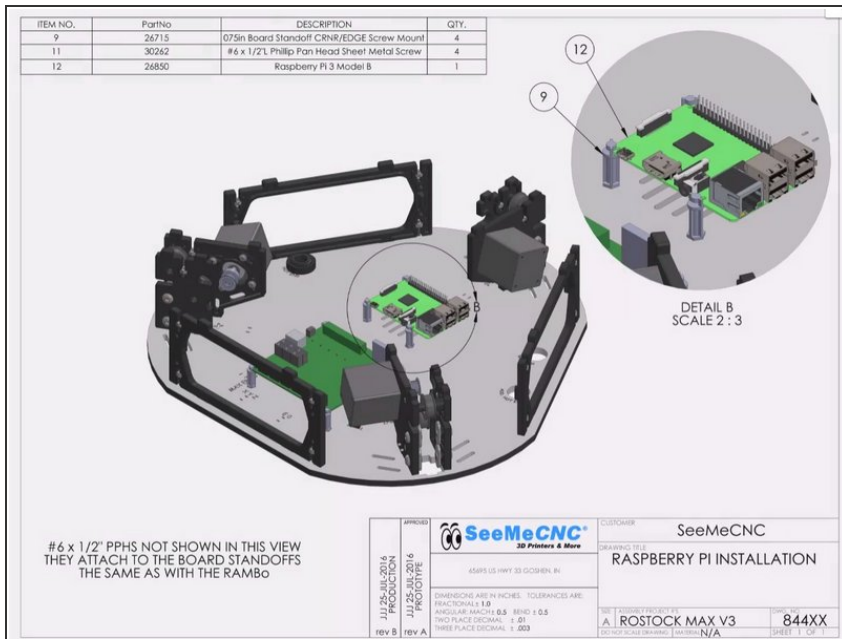
ITEM NO.	PartNo	DESCRIPTION	QTY.
9	26715	075in Board Standoff CRNR/EDGE Screw Mount	4
11	30262	#6 x 1/2" L Phillip Pan Head Sheet Metal Screw	4
12	26850	Raspberry Pi 3 Model B	1



#6 x 1/2" PPHS NOT SHOWN IN THIS VIEW  
THEY ATTACH TO THE BOARD STANDOFFS  
THE SAME AS WITH THE RAMBo

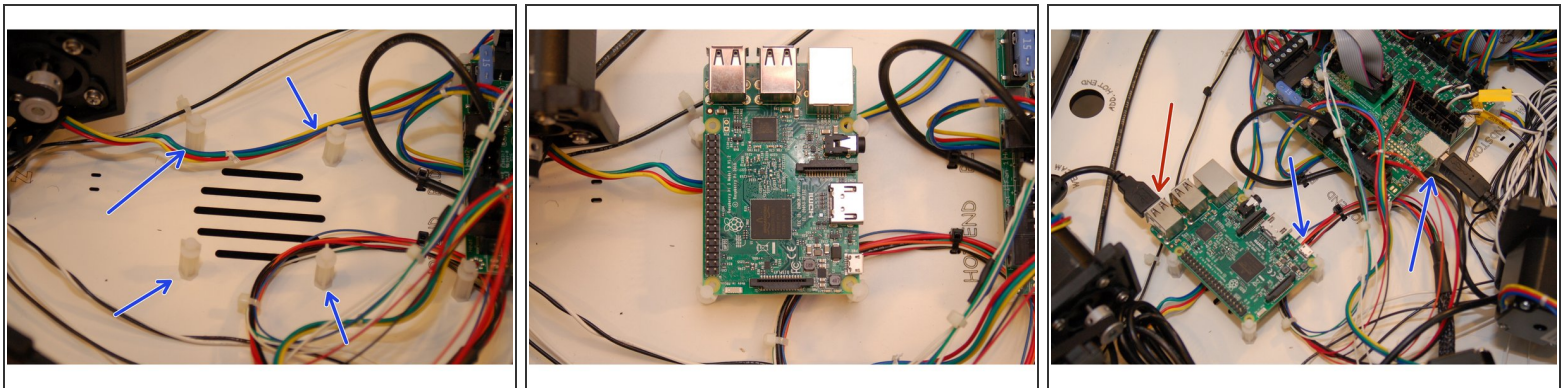
JJJ 25-JUL-2016 PRODUCTION rev B	APPROVED JJJ 25-JUL-2016 PROTOTYPE rev A	 <b>SeeMeCNC®</b> 3D Printers & More  65695 US HWY 33 GOSHEN, IN  DIMENSIONS ARE IN INCHES. TOLERANCES ARE: FRACTIONAL ± 1.0 ANGULAR: MACH ± 0.5 BEND ± 0.5 TWO PLACE DECIMAL ± .01 THREE PLACE DECIMAL ± .003	CUSTOMER SeeMeCNC	
			DRAWING TITLE RASPBERRY PI INSTALLATION	
			SIZE A	ASSEMBLY PROJECT # ROSTOCK MAX V3
			DO NOT SCALE DRAWING	MATERIAL N/A
			DWG. NO. 844XX	SHEET 1 OF 1

## Step 1 — Overview Installation Location



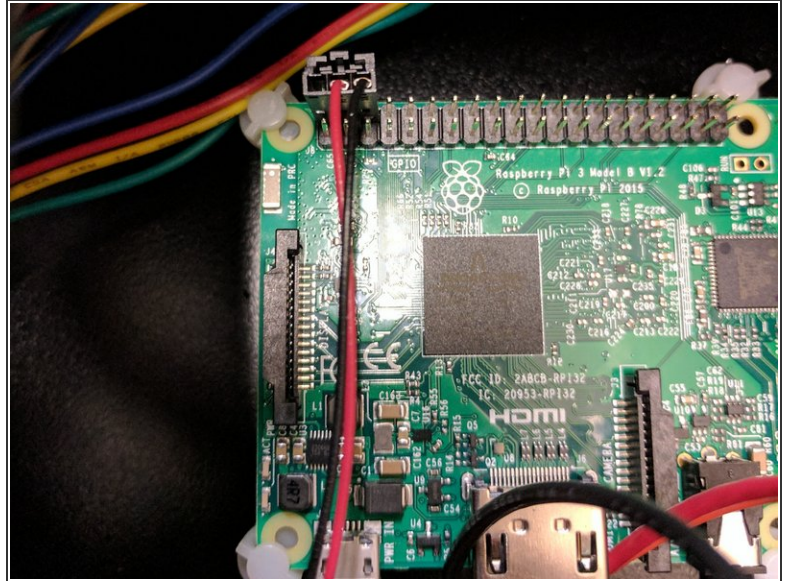
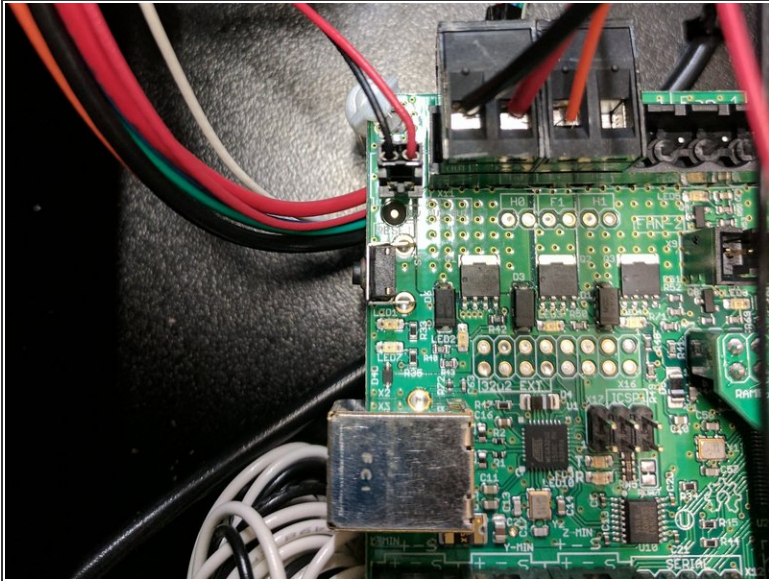
- This shows the intended location for the Raspberry Pi to be installed.
- If you need additional board supports, you can purchase them here: [Edge Support](#)

## Step 2 — OPTIONAL UPGRADE: Raspberry Pi, Continued



- Install the four plastic mounting posts at the locations shown in the first image. Leave them slightly loose so they can be turned easily.
- Install the Pi into the cut-outs at the top of each mounting post. The posts grip the sides of the Pi at the USB end and the corners of the Pi at the other end of the board.
- Attach the Rambo's USB cable to the Rambo and the USB connection on the Pi as indicated.

### Step 3 — OPTIONAL UPGRADE: Raspberry Pi, Continued



- Install a custom wire whip for power between the RAMBo and the Raspberry Pi.
- On the RAMBo this will connect to the 5v AUX OUT. Pay attention to polarity.
- On the Raspberry Pi this will connect to pins 4 and 6 (see picture). Pay attention to polarity.