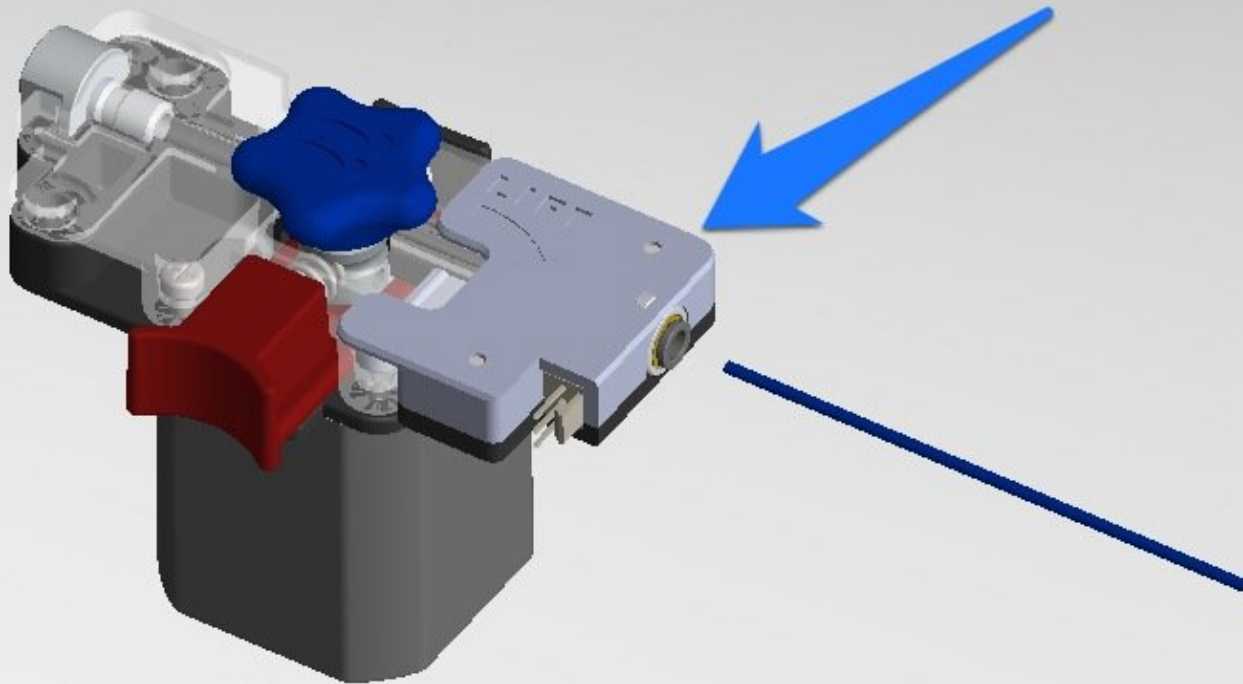


# SeeMeCNC Guides

## DUET Filament Runout Switch Installation

Written By: SeeMeCNC

### Filament Runout Switch



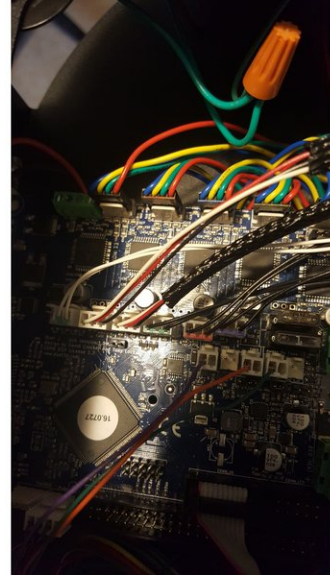
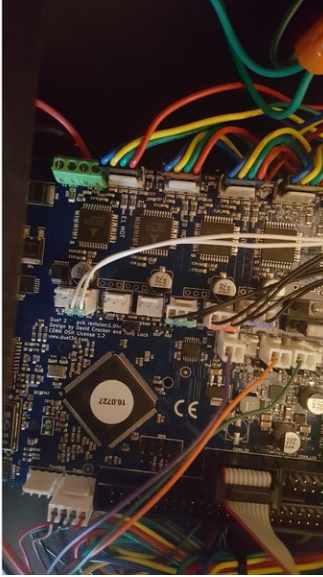
## Step 1 — BETA KIT INSTRUCTIONS WORK IN PROGRESS



 We're working on the final revision.

- Assemble your FRS unit. If you are using printed parts for the housing and cover, ensure that they fit together well.
- Be sure the bearing rotates freely without interference from any printed protrusions.
- Be sure the filament guide protrusions fit together well and provide a clear filament path free of obstructions.
- DO NOT drop the ball bearing. (you will never find it again)
- When everything is good, do your final assembly with two screws.

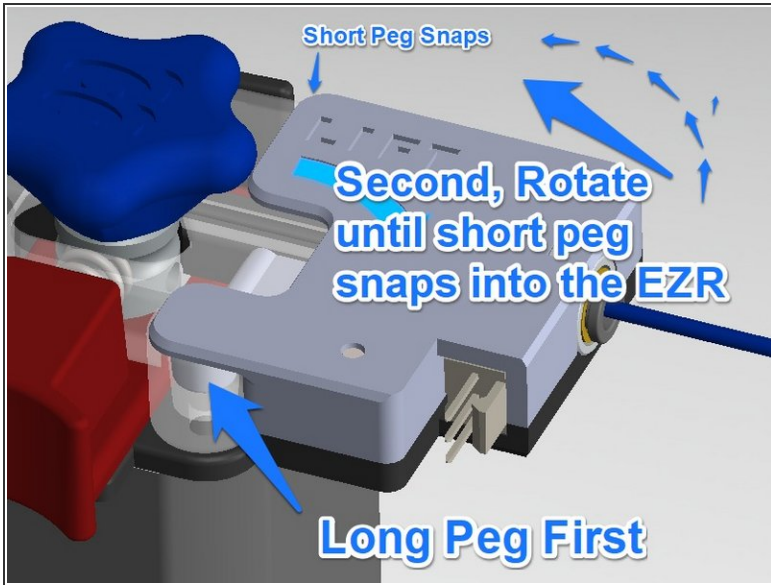
## Step 2 — Connect wiring to Duet2 Controller



**⚠ FIRST: Unplug your printer from the AC line voltage. Risk of electric shock!**

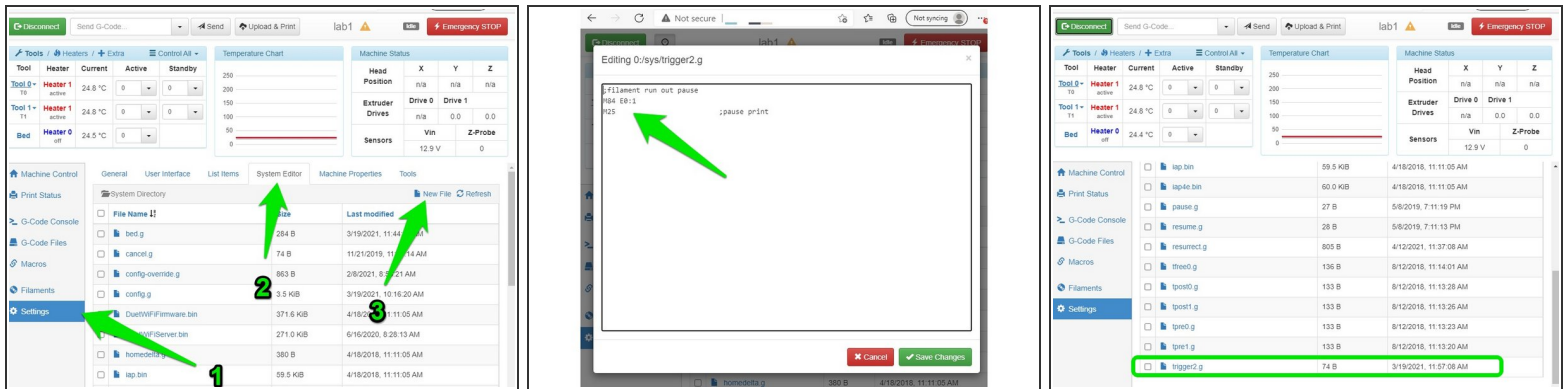
- Remove the cover(s) to access the Duet controller.
- Plug one end of the KK wire harness into the E0 (and E1 if installing both) end stop switch header(s) of the Duet controller.
- Route the wire harness to the extruder.
- Re-install protective covers so no AC line voltage is exposed so the printer is safe for operation.

### Step 3 — Mount to EZR Struder



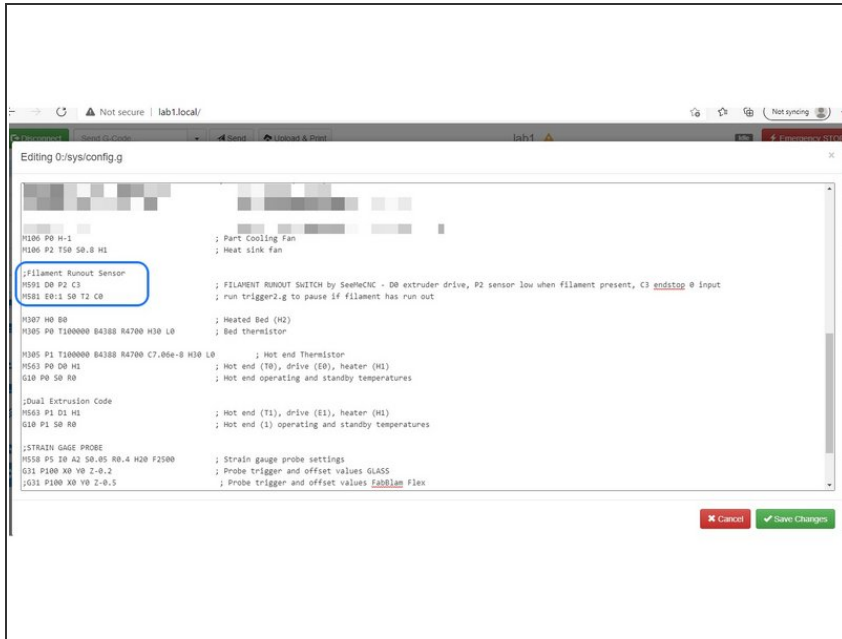
- It's a snap, really. No tools required.
- Just insert long peg, rotate and gently lift, and snap short peg into hole.
- Plug in wiring connection.

## Step 4 — Add trigger2.g file to sys folder



- Go to the Duet control screen: go to "Settings", then "System Editor" then click "New File" <<SEE PICTURE>>
- Name the new file (no quotes) "trigger2.g"
- Enter 2 lines of code as follows and save: <<SEE PICTURE>>
  - M84 E0:1
  - M25
- ❗ And the sys folder will show the new file. <<SEE PICTURE>>

## Step 5 — Edit config.g file



- Open the system folders.
- CLICK on "config.g" file to open and edit.
- ❗ Don't be concerned if your config.g file looks a little different from the picture. Don't change your file. Just add to it.
- Add the new lines below comments for the hotend fan. The new lines are shown in the photo and below, then save
  - M591 D0 P2 C3
  - M581 E0:1 S0 T2 C0
- Power cycle your printer.